

Compact Ethernet-over-E1 WAN Bridge

NetLink 2701/I EtherRocket & 2701RC Rack Card

These devices, available in low-cost standalone or rack-mountable versions, terminate G.703/G.704 NTU with on-board transparent Ethernet Bridge extend branch-office LAN segments over E1/FE1 simply and affordably.

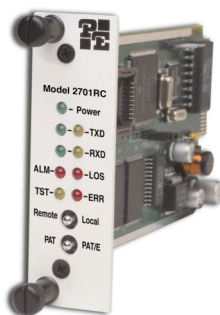


Patton Electronics introduces a new way of interconnecting remote branches to a Main Office LAN using the Model 2701/I Ethernet-over-E1 Bridge. Called "Remote Router Porting" (RRP), it offers network managers and integrators a simple and economical way for LAN-to-LAN deployments.

At the branch office, RRP replaces the traditional router and CSU/DSU solution with Patton's Ethernet-over-E1 Bridge, which includes integrated E1 and 10Base-T transparent bridging. This unit allows for high-speed PPP data connections across the Wide Area Network at scalable data rates of nx56/nx64kbps up to 2.048 Mbps, and also connects directly to the 10Base-T branch office LAN at 10Mbps. The 2701/I transparently forwards Ethernet packets to a headquarters LAN based on their destination MAC address.

At headquarters, RRP builds on the bridging capabilities of a router to extend their serial or WAN ports across town or across the country. In order for the central routed network to connect to a remote branch Ethernet network, the serial or WAN interface of the router needs to be configured as a PPP IP half-bridge. In this configuration the Ethernet-over-E1 Bridge sends bridge packets (BPDUs) to the router's WAN interface. The router will then look at the layer-3 address information and will forward these packets based on its IP address. The router's port, connected through the E1 network and Ethernet-over-E1 Bridge, appears as a virtual interface at the branch office network.

The Model 2701/I Ethernet-over-E1 Bridge supports G.704 framing, and AMI and HDB3 line coding. Data rates, framing, and coding options are programmed by DIP switches or from a VT-100 terminal with menu-driven software. A full range of system and diagnostic features make setup simple and quick.



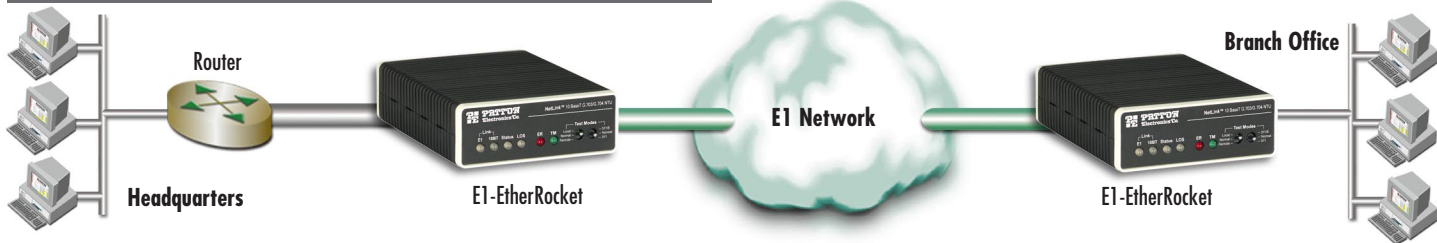
FEATURES & BENEFITS

- Terminates E1/Fractional E1 service
- 10Base-T Ethernet-over-E1 Bridge
- Available in low-cost standalone or rack-mountable (2701RC) versions
- PPP (Point-to-Point Protocol, RFC 1661) with BCP (Bridge Control Protocol, RFC 1638)
- 2 Mbps E1 Line Rate with n x 64 kbps timeslot selection
- Switch-selectable AMI or HDB3 line encoding options
- 75-ohm dual coax and 120-ohm twisted-pair G.703 connections
- Local and remote loopback diagnostics
- Internal and G.703 network timing
- Conforms to ONP requirements CTR 12 and CTR 13 for connection to international Telecom networks
- Rack cards fit into Model 1001 access rack system

ORDERING INFORMATION

- 2701/I/48:** G.703 NTU, with Ethernet interface; 48 VDC power supply (PS)
- 2701/I/U:** G.703 NTU, with Ethernet interface; 120–220 VAC PS
- 2701RC/A/I:** E1/FE1 Card, V.35 interface
- 2701RC/C/IA:** E1/FE1, 10Base-T/RJ-45 interface
- 2701RC/D/D:** E1/FE1 Card, X.21 interface
- 2701RC/D/V:** E1/FE1 Card, X.21 interface

Remote Router Porting with Patton's Ethernet-over-E1 Bridge



SPECIFICATIONS

2701/I
Line Rate: 2 Mbps with nx64 kbps timeslot selection
Network Connector: RJ-48C and Dual Coaxial
DTE Interface: 10Base-T Ethernet
Line Coding: AMI or HDB3
Line Framing: G.703 (unframed) or G.704/G.732 (framed)

Clocking: Internal or Receive Recover
DTE Rates: 10 Mbps (10Base-T)
Indicators: E1 Link Status, TD, RD, Loss of Sync, Error, Test Mode, Ethernet Status
Diagnostics: Local/Remote Loop, 511
Line Isolation: 1500VRMS

Compliance: CE Mark, G.703, G.704, G.723, G.832, CTR-12 and CTR-13
Environment: Temp.: 32–122°F (0–50°C) • Humidity: 5–90% non-condensing
Dimensions: 5.84L x 4.16W x 1.51H in. (14.84L x 10.6W x 3.84H cm)
Weight: 2.225 lbs (1.02 Kg)

2701RC
Data Rate: Smooth Clock 2.048 Mbps
Network Connector: RJ-48C (all versions); Dual Coaxial (X.21 & Ethernet)
DTE Interface: EIA-530, X.21/V.11, V.35, or 10Base-T Ethernet
Line Coding: AMI or HDB3
Line Framing: G.703 (unframed) or G.704/G.732 (framed)

Clocking: Internal, External or Receive Recover
DTE Rates: nx64kbps (EIA-530, X.21/V.11, V.35); 10Mbps (10Base-T)
Indicators: E1 Link Status, TD, RD, Loss of Sync, Error, Test Mode, Ethernet Status (on 10Base-T version)
Diagnostics: Local/Remote Loop, 511
Line Isolation: 1500VRMS

Compliance: CE Mark, G.703, G.704, G.723, G.832, CTR-12 and CTR-13
Environment: Temp.: 32–122°F (0–50°C) • Humidity: 5 to 90% non-condensing
Dimensions: 5.84L x 4.16W x 1.51H in (14.84L x 10.6W x 3.84H cm)
Weight: 2.225 lbs (1.02 Kg)