

**IP-PBX**

**SmartLink 4250 & SIPxNano IP PBXs**

The Patton Smartlink 4250 IP PBX provides complete PBX services to VoIP equipment within centralized or decentralized enterprises. The SIPxNano is an advanced IP PBX solution for small companies or branch offices.

The small enterprises and branch offices of up to 30 employees can make use of the SIPxNano IP PBX. At the size of the hardback book, the SIPxNano system delivers big company PBX features at a small enterprise price. Call hunt groups, auto-attendant, voicemail and integration with email are standard with every system. A single inbound call can ring one or multiple numbers, including offsite numbers, concurrently or serially.

The SL4250 family of IP PBXs are designed for enterprises of 30 – 250 employees. These slim, 1 RU rack mount systems easily mount into a standard 19" rack. Each system includes two disks implemented using RAID1 for complete back up of voicemail messages and system software. In addition to the rich calling features of the SIPxNano, the SL4250 provides an ACD system for routing calls according to established company call routing objectives

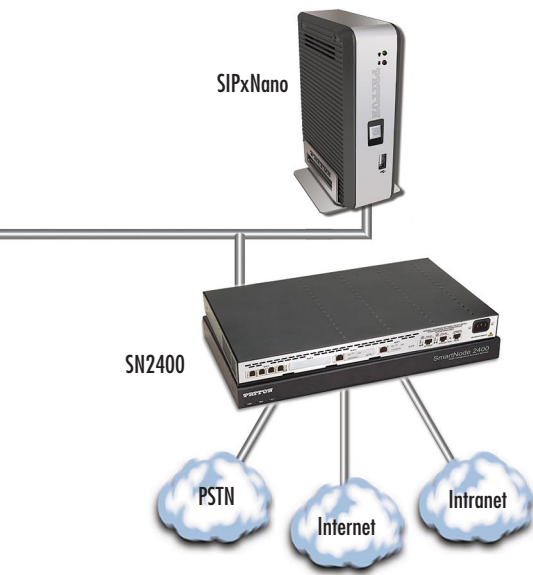


SIPxNano

Enterprises operating in multiple locations can leverage their existing data intranet/VPN investment to extend the headquarters IP-PBX all locations and telecommuters. Every employee can be reach on a simple three-digit extension and all the features of the IP PBX are available to all employees. Intra-enterprise long distance phones bills drop to zero while increasing organizational productivity. Additional cost savings can be achieved through downsizing of the local PSTN connection(s) and/or leveraging the local connections to implementing least cost telephony routing.

QoS capabilities on all elements of the Patton IP voice solution ensures that voice traffic can be given a higher priority than data within your network

The IP PBX includes a robust Voice mail system that allows user to retrieve their voice mails from any phone or interface with a browser. User preferences on the web interface allow each user to set voice message delivery options including delivery of voicemails to email.



The SmartLink 4250 is based on the VoIP industry standard SIP protocol (IETF RFC 3261) and provides complete SIP registration, subscription and notification services to any SIP capable end point.

When partnered with a Patton SmartNode product, the Patton 4250 IP PBX can provide VoIP services to analog phones, faxes and legacy PBX systems that are not prepared to support newer VoIP technologies. Patton's ability to link voice technologies of the past with today's VoIP technologies allows your enterprise to cost effectively move forward.

**FEATURES & BENEFITS**

- Full Enterprise PBX, Call Control, and Routing functions
- Leverages the unique functionality of Patton's Routers and Gateways and SIP phones
- Standards-based implementation of the IETF Session Initiation Protocol (SIP) standard for end-to-end signaling.
- Simple to install with a browser-based configuration and management
- Easy to use with browser-based user interfaces
- Unprecedented customizable PBX system and unified messaging features
- Email notification and delivery of voice mail
- Adaptable to a variety of telephony environments
- Modular architecture allows distributed network integration for multi-site, multi-station and multi-location support
- High reliability, backup and load balancing
- Highly manageable, productive, and secure
- Fully supported by Patton

**ORDERING INFORMATION**

**SIPxNano-15:** SmartLink IP PBX NanoServer & 15 user license w/1 yr Sfw maint.

**SIPxNano-30:** SmartLink IP PBX NanoServer & 30 user license w/1 yr Sfw maint.

**SL4250-75:** SmartLink IP PBX rack mount server w/RAID1 & 75 user license w/1 yr Sfw maint.

**SL4250-125:** SmartLink IP PBX rack mount server w/RAID1 & 125 user license w/1 yr Sfw maint.

**SL4250-250:** SmartLink IP PBX rack mount server w/RAID1 & 250 user license w/1 yr Sfw maint.

