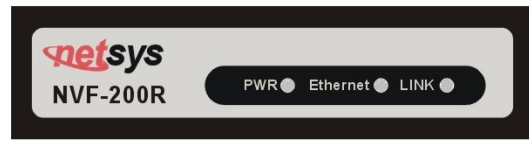




NVF-200L



NVF-200R

One 10/100Mbps Fast Ethernet with one VDSL 4-Band CO/CPE Modem Ver.A4

The NVF-200L/R works as Ethernet to/from VDSL subscriber-site conversion bridge. The NVF-200L/R uses QAM-based 4-Band VDSL technologies. Which supports 5M/15M/25Mbps per port symmetrical bandwidth over phone wiring with long driver capable 2.1/1.3/0.6Km(7000/4333/2000 feet).

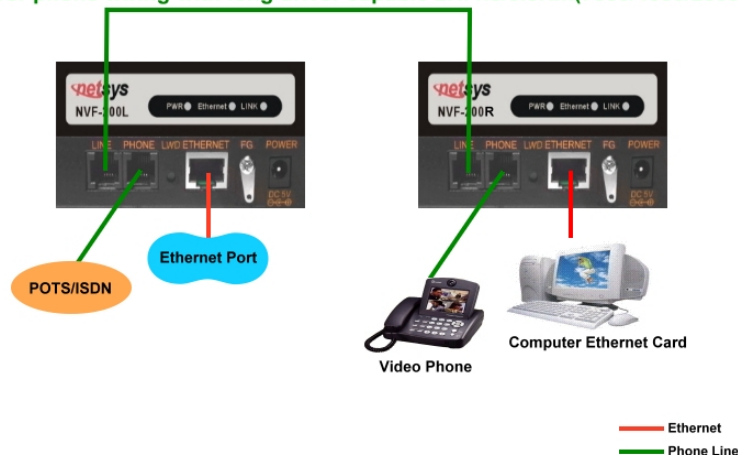
The NVF-200R also works with NVF-800S & NVF-2400S VDSL IP DSLAM, together to form a cost-effective solution for services such as remote lecturing, telemedicine, video conferencing, Video-on-Demand (VoD), IP-TV etc. Internet access, and various high-speed data applications.

The front-panel provide LEDs indication of system and interface status. The built-in POTS/ISDN splitter allows a standard POTS phone or ISDN device to be connected. Full or half-duplex mode of LAN operations is automatically sensed and configured. VDSL link rates are configured by local IP DSLAMs over the auto-speed function.

Therefore, NVF-200L/R supports auto-speed, plug & play operations on the subscriber-site, and are part of an ideal solution for delivering cost-effective, high-performance broadband/multimedia services to Multi-Dwelling Units (MDU) and Multi-Tenant Units (MTU) environments such as hotels, campus, hospitals and telecom.

>> Point To Point Application

Supports 5M/15M/25Mbps per port symmetrical bandwidth over phone wiring with long driver capable 2.1/1.3/0.6Km(7000/4333/2000 feet).



>> Key Features & Benefits

- Compliant with IEEE802.3 10BASE-T standard.
- Compliant with IEEE802.3u 100BASE-TX standard.
- Compliant with ETSI, ITU, ANSI standards.
- Supports plug & play.
- Supports 5M/15M/25Mbps per port symmetrical bandwidth over phone wiring with long driver capable 2.1/1.3/0.6Km(7000/4333/2000 feet).
- Supports 1 * RJ-11 connector for Ethernet over VDSL.
- Supports 1 * RJ-11 connector for telephone/PBX connection.
- Supports 1 * RJ-45 port for 10/100Mbps Ethernet with Auto MDI/MDIX.
- Support Auto-speed & full duplex for VDSL port.
- Support console port for firmware upgrade and maintain (LT only).
- Voice and Data work on the same telephone line.
- Spectral compatibility with xDSL, ISDN (2B1Q/4B3T).
- Supports flow control IEEE802.3x for Full Duplex & Back Pressure for Half Duplex.
- Supports long packet size up to 1536 Bytes.
- Supports POTS/ISDN voice pass.
- Supports 4wires phone set pass through.
- Splitter on board
- Supports Surge protection.
- Provides Power LED.
- Provides LED indication Link/Active Status for Ethernet port and Link for VDSL port.
- External switching power adapter Input: AC 85-240 volts/50-60Hz;
Output: DC 5V/1A or above.

Metal case & mini size design
Safety by CE, FCC, VCCI
RoHS compliant

>> Specifications

Standard

IEEE802.3 standard
IEEE802.3u standard
Compliant ETSI, ITU, ANSI standards

Interface

1 * RJ-45 10/100Mbps Ethernet port
1 * RJ-11 connector for EoVDSL
1 * RJ-11 connector for telephone connection
Console port: RS-232C / 19200bps (NVF-200L only)

Cable Connections

RJ-45 (Ethernet): Category 3, 4, 5 UTP/STP
RJ-11 (EoVDSL): Twisted-Pair phone wire

Provides LED indication Link/Active Status for Ethernet port and Link for VDSL port.

VDSL Frequency Spectrum:

NVF-200L_ Transmitter: 0.9MHz ~ 3.9MHz
Receiver: 4MHz ~ 7.9MHz

NVF-200R_ Transmitter: 4MHz ~ 7.9MHz
Receiver: 0.9MHz ~ 3.9MHz

POTS/ISDN pass filter Spectrum: 0 ~ 630KHZ

Power Consumption: NVF-200L(LT): 5.4W / NVF-200R(NT): 6W

Operating Temperature: 0°C ~ 50°C (41F ~ 122F)

Storage Temperature: -20°C ~ 65°C (-4F ~ 149F)

Humidity: 10 to 90% (non-condensing)

Dimensions: 95 x 110 x 24 mm(3.74" x 4.33" x 0.94").

Weight: 313.5g (net)

>> Ordering Information

- NVF-200L: VDSL 4-Band CO side Modem
- NVF-200R: VDSL4-Band CPE side Modem



National Enhance Technology Corp.

2F, No. 196-3, Tatung Rd., Sec. 3, Hsi-Chih, Taipei Hsien, Taiwan, R.O.C.

TEL:886-2-8647-3456

FAX:886-2-8647-1120

E-mail: sales@netsys.com.tw

<http://www.netsys.com.tw>